

AQUA ENERGY DL HIGH PRESSURE

AQUA ENERGY INTERNATIONAL LTD

8 St James Business Centre, Linwood Road

Paisley PA3 3AT

Scotland, UK

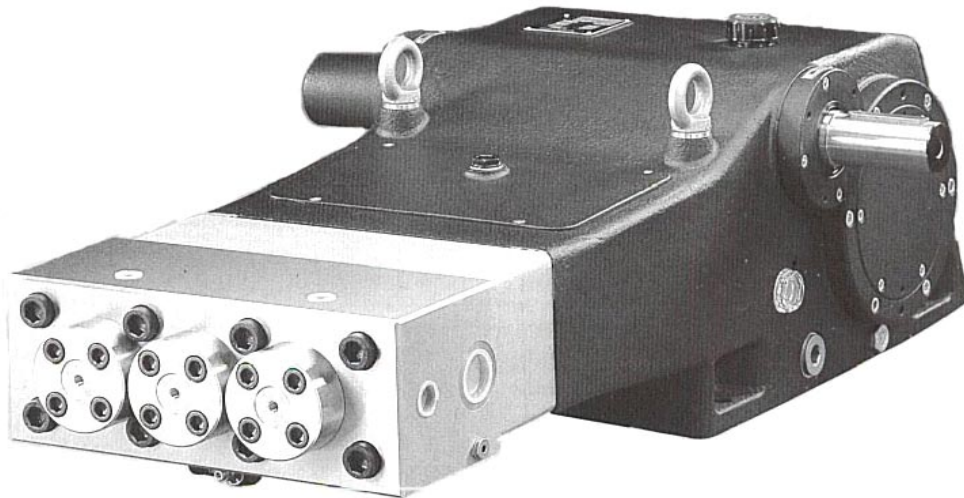
Tel: (+44) (0) 141 849 6888

Fax: (+44) (0) 141 848 5777

E-mail: info@aquaenergy.com

<http://www.aquaenergy.com>

INDUSTRIAL PLUNGER PUMP



PUMP SPECIFICATIONS

Rated Horsepower -----156
Number of cylinders -----3
Plunger Stroke -----mm90

Oil Capacity -----lt 14
Plunger Load ----- 3,045Kg
Pump Weight -----Kg 380

FLUID END

FLUID HEAD - Special high resistance stainless steel.

VALVES & SEATS – Valves made in stainless steel and bronze seats.

PLUNGERS - Solid ceramic plungers.

PACKING – Pressure Packing internal cooling system.
Double pressure packings

LUBRICATION - Plungers and Packing lubricated by water supply with water spill venting.

POWER END

POWER FRAME - High strength cast iron.

CRANKSHAFT - Hardened and tempered alloy steel.

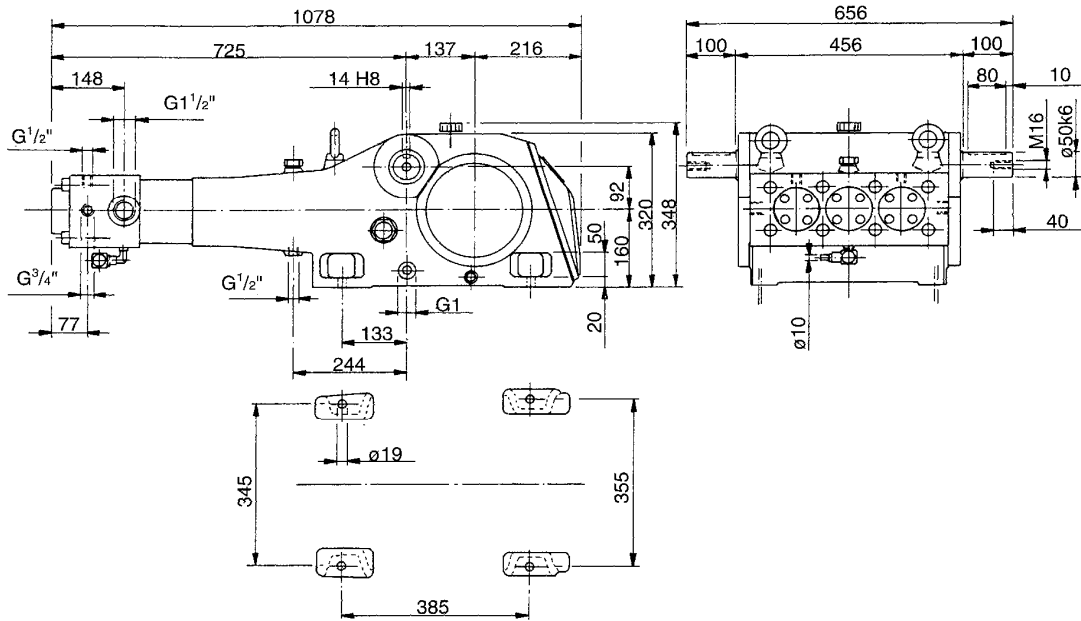
CRANKSHAFT BEARINGS - Double roller rim.

CONNECTING RODS - Surface treated spheroidal cast Iron.

REDUCTION GEAR - Internal 3.389:1 or 2.95: 1 reduction ratio gear from either side of pump.

LUBRICATION – Power end parts and gearbox are splash lubricated by oil in crankshaft reservoir.

DL SERIES



DL PUMP:

Maximum design pressure: **1,400bar** (20,300psi)

Maximum inlet pressure: **7 bar** (101.50 psi)

Minimum inlet pressure: **5 bar** (72.50 psi)

Standard connections: Suction ----- G 1-1/2"

Discharge ----- G 3/4"

Table of pump versions

Model	A. 1750 RPM (ratio 1:3,389)						B. 1500 RPM (ratio 1:2,95)					
	Volume		Pressure		Power		Volume		Pressure		Power	
	l/min	Gpm	Bar	Psi	Kw	Hp	l/min	Gpm	Bar	Psi	Kw	Hp
DL 20	44	11.6	1400	20300	110	150	43	11.3	1400	20300	110	150
DL 22	53	14.0	1100	15950	110	150	52	13.7	1100	15950	110	150
DL 24	63	16.6	950	12400	114	155	62	16.3	950	13800	112	153
DL 26	74	19.5	800	11600	113	153	72	19.2	800	11600	111	151
DL 28	86	22.7	700	10150	115	156	84	22.3	700	10150	113	154
DL 30	98	25.9	600	8700	112	152	96	25.6	600	8700	111	151

A. Rated crankshaft speed 516 rpm

B. Rated crankshaft speed 508 rpm

Performance refers to theoretical delivery with 100% volumetric efficiency.

Under normal operating conditions, pump volumetric efficiency is over 95%.

Please contact our technical staff in case continuous and heavy-duty, or special applications.

AQUA ENERGY