

AQUA ENERGY DLS HIGH PRESSURE

AQUA ENERGY INTERNATIONAL LTD

INDUSTRIAL PLUNGER PUMP

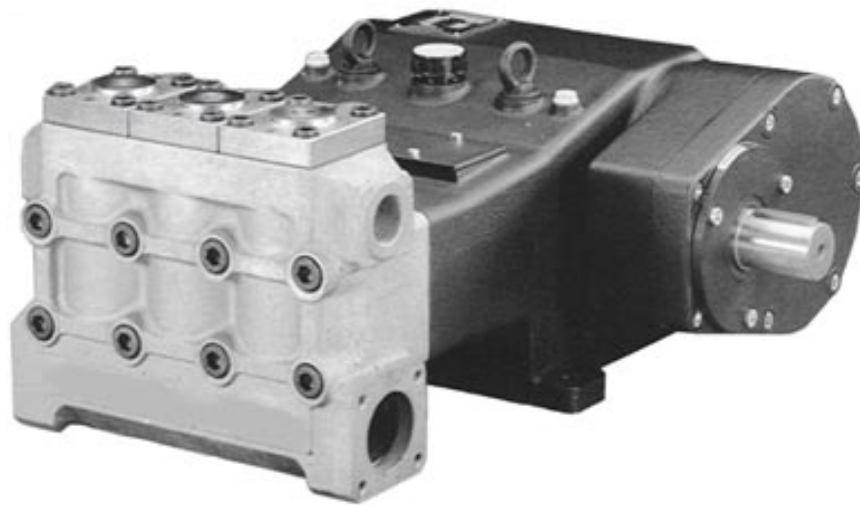
8 St James Business Centre
Linwood Road, Paisley PA3 3AT
Scotland, UK

Tel: (+44) (0) 141 849 6888

Fax: (+44) (0) 141 848 5777

E-mail: sales@aquaenergy.com

www.aquaenergy.com



PUMP SPECIFICATIONS

Rated Horsepower -----152

Number of cylinders -----3

Plunger Stroke -----mm72

Oil Capacity -----lt 14

Plunger Load ----- 4,363Kg

Pump Weight -----Kg 400

FLUID END

FLUID HEAD - Chemical nickel treated spheroidal cast iron.

VALVES & SEATS – Vertical fitted valves made in stainless steel and Bronze.

PLUNGERS - Stainless Steel with ceramic coating.

PACKING – Double Pressure Packing giving long service.

LUBRICATION - Plungers and Packing lubricated by water supply with water spill venting.

POWER END

POWER FRAME - High strength cast iron.

CRANKSHAFT - Hardened and tempered alloy steel.

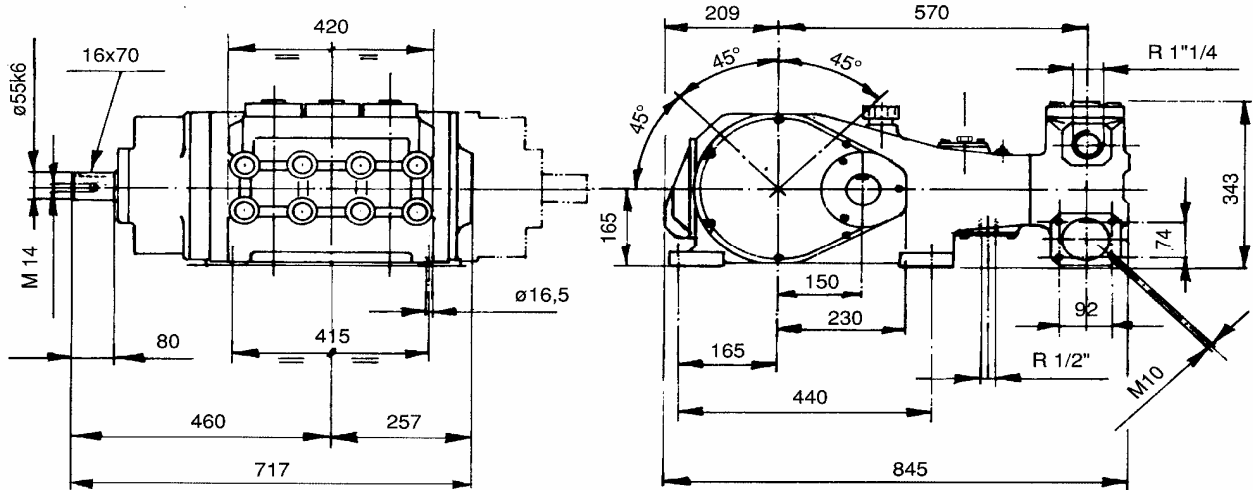
CRANKSHAFT BEARINGS - Double roller rim.

CONNECTING RODS - Surface treated spheroidal cast iron.

REDUCTION GEAR - External 3.29:1 or 2.65: 1 reduction ratio gear from either side of pump.

LUBRICATION – Power end parts and gearbox are splash lubricated by oil in crankshaft reservoir.

DLS SERIES TRIPLEX



DLS PUMP:

Maximum design pressure 300bar (4,350psi)
Maximum inlet pressure 3 bar (45psi)

Standard connections: Suction ----- 80mm
Discharge ----- 1 1/4"

Table of pump versions

Model	1800 rpm /1 (ratio 1:3,29) *						1500 rpm /1 (ratio 1:2,65) **					
	Volume		Pressure		Power		Volume		Pressure		Power	
	l/min	Gpm	Bar	Psi	Kw	Hp	l/min	Gpm	Bar	Psi	Kw	Hp
DLS 45	187	49.4	300	4350	108	147	194	51.2	300	4350	112	152
DLS 50	231	61.0	250	3600	111	151	240	63.4	240	3500	111	151
DLS 55	280	74.0	205	2950	110	149	290	76.6	200	2900	112	152
DLS 60	333	88.0	175	2550	112	152	345	91.1	165	2400	110	149
DLS 65	391	103	145	2100	109	148	405	107	140	2050	109	148

* Rated crankshaft speed 546 rpm

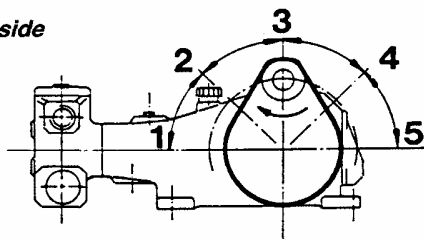
** Rated crankshaft speed 566 rpm

Performance refers to theoretical delivery with 100% volumetric efficiency.

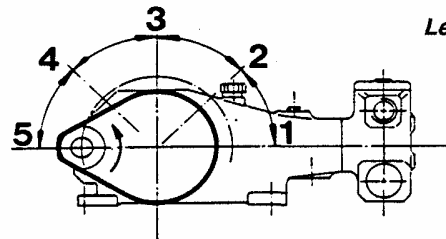
Under normal operating conditions, pump volumetric efficiency is over 95%.

Please contact our technical staff in case continuous and heavy-duty, or special applications.

D Right side



Left side **S**



By example: gear box positioned on D3 and S5.

The gearbox can be fitted on the left or right side of the pump and in five different positions