

# **AQUA ENERGY JL** HIGH PRESSURE

**AQUA ENERGY INTERNATIONAL LTD**

**INDUSTRIAL PLUNGER PUMP**

8 St James Business Centre  
Linwood Road, Paisley PA3 3AT  
Scotland, UK  
Tel: (+44) (0) 141 849 6888  
Fax: (+44) (0) 141 848 5777  
E-mail: [info@aquaenergy.com](mailto:info@aquaenergy.com)  
<http://www.aquaenergy.com>



## **PUMP SPECIFICATIONS**

**Rated Horsepower** -----40  
**Number of cylinders** -----3  
**Plunger Stroke** -----mm40

**Oil Capacity** -----lt 3.8  
**Plunger Load** ----- 1,370 Kg  
**Pump Weight** ----- -Kg 65

### **FLUID END**

**FLUID HEAD** - Chemical nickel treated spheroidal cast iron.

**VALVES & SEATS** – Vertical fitted valves made in stainless steel and Bronze spacers.

**PLUNGERS** - Stainless Steel with ceramic coating.

**PACKING** – Double Pressure Packing giving long service.

**LUBRICATION** - Plungers and Packing lubricated by water supply with water spill venting.

### **POWER END**

**POWER FRAME** - High strength cast iron.

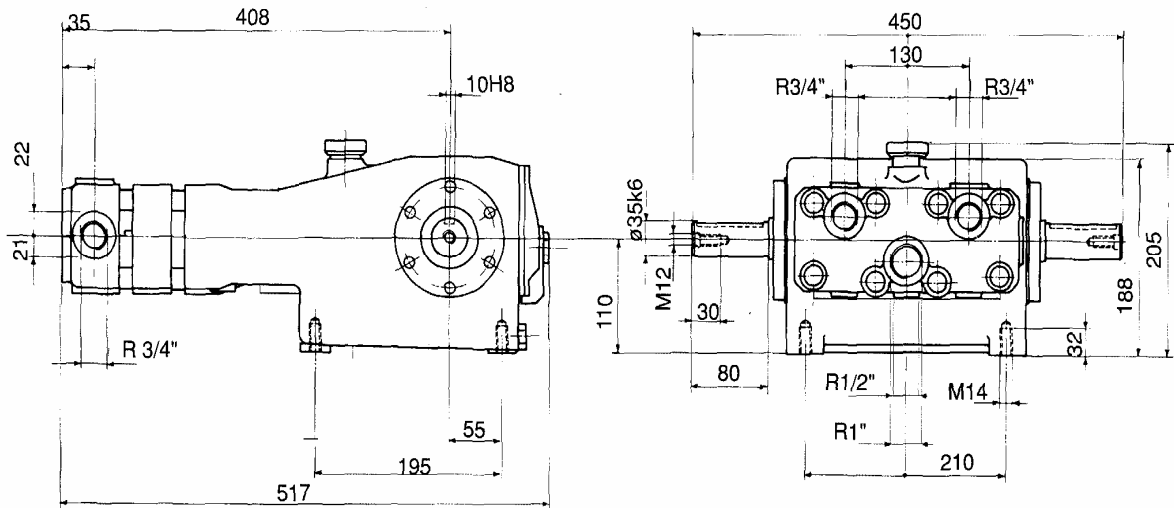
**CRANKSHAFT** - Hardened and tempered alloy steel.

**CRANKSHAFT BEARINGS** - Double roller rim.

**CONNECTING RODS** - Surface treated spheroidal cast Iron.

**LUBRICATION** – Power end parts and gearbox are splash lubricated by oil in crankshaft reservoir.

# JL SERIES TRIPLEX



## JL PUMP:

Maximum design pressure 500bar (7,200psi)

Maximum inlet pressure 3 bar (45psi)

Crankshaft with choice of projection

Standard connections: Suction ----- G 1"

Discharge -----G 1"

## Table of pump versions

Model	RPM	Volume		Pressure		Power	
		L/min	Gpm	Bar	Psi	Kw	Hp
JL 18	1000	30.5	7.9	500	7200	29.1	39.6
JL 20	1000	37.7	10.0	400	5800	29.0	39.4
JL 22	1000	45.6	12.0	320	4650	28.1	38.1
JL 25	1000	58.9	15.6	250	3600	28.3	38.5
JL 30	750	62.4	16.5	180	2600	21.6	29.4

Performances refer to theoretical delivery with 100% volumetric efficiency.

Under normal operating conditions pump volumetric efficiency is over 95%.

Please contact our technical staff in case of continuous and heavy-duty or special applications.

Special versions with stainless steel head and manifold are available for pumping seawater, brackish water or other processing or aggressive liquids.

These special versions can be used for continuous duty and are specially designed for reverse osmosis, treatment, transfer, lifting and super-filtration plants and sea-water blasting.

# AQUA ENERGY