

AQUA ENERGY SL HIGH PRESSURE

AQUA ENERGY INTERNATIONAL LTD

INDUSTRIAL PLUNGER PUMP

8 St James Business Centre, Linwood Road

Paisley PA3 3AT

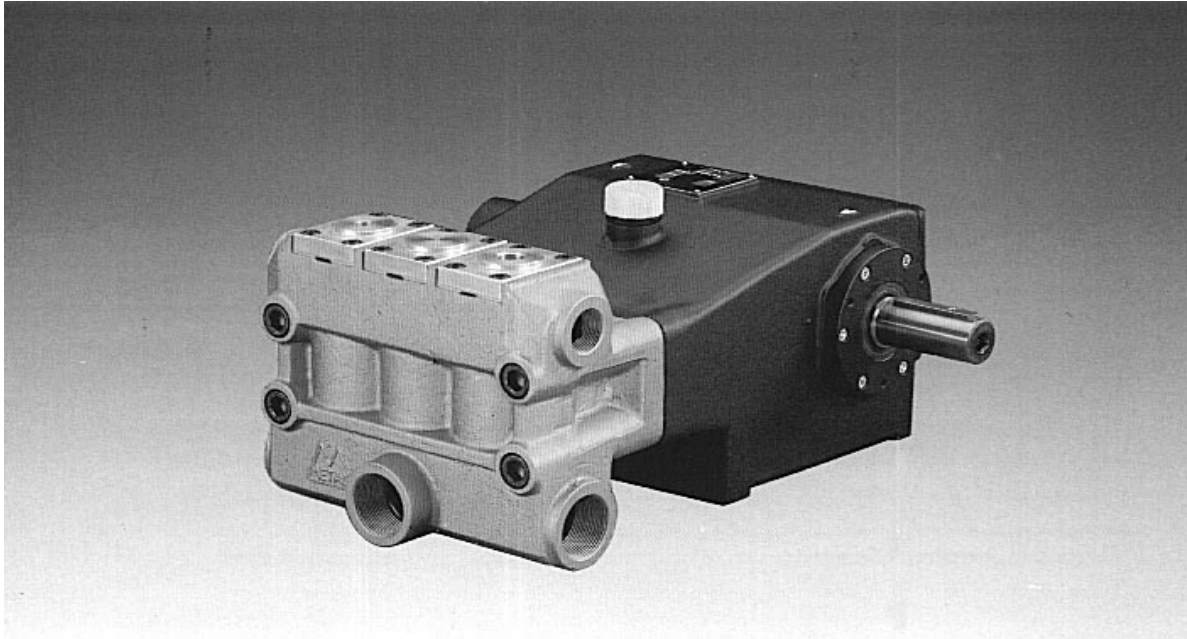
Scotland, UK

Tel: (+44) (0) 141 849 6888

Fax: (+44) (0) 141 848 5777

E-mail: info@aquaenergy.com

www.aquaenergy.com



PUMP SPECIFICATIONS

Rated Horsepower -----	40	Oil Capacity -----	lt 3.8
Number of cylinders -----	3	Plunger Load -----	1,370 Kg
Plunger Stroke -----	mm40	Pump Weight -----	Kg 70

FLUID END

FLUID HEAD - Chemical nickel treated spheroidal cast iron.

VALVES & SEATS – Vertical fitted valves made in stainless steel and Bronze spacers.

PLUNGERS - Stainless Steel with ceramic coating.

PACKING – Double Pressure Packing giving long service.

LUBRICATION - Plungers and Packing lubricated by water supply with water spill venting.

POWER END

POWER FRAME - High strength cast iron.

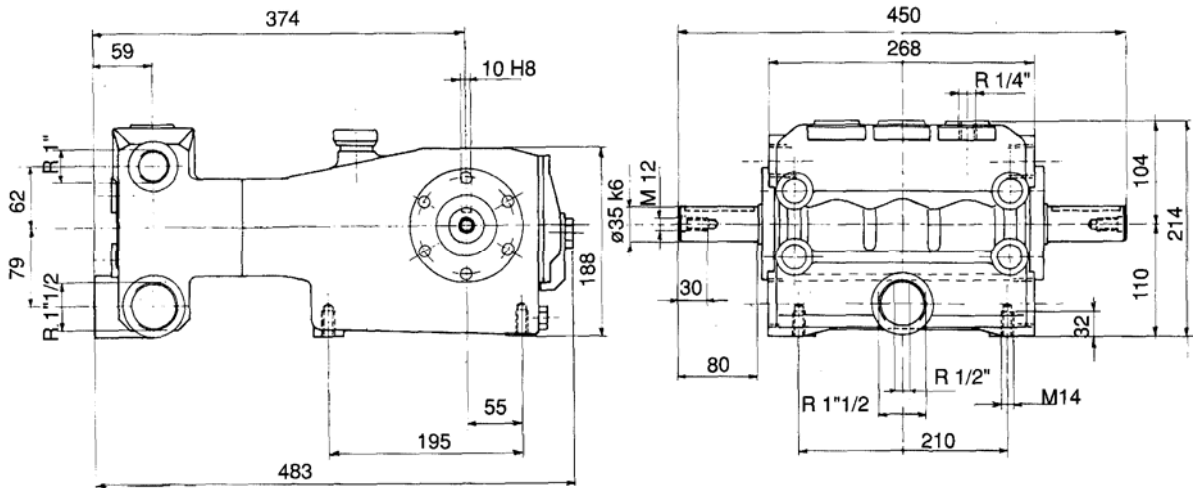
CRANKSHAFT - Hardened and tempered alloy steel.

CRANKSHAFT BEARINGS - Double roller rim.

CONNECTING RODS - Surface treated spheroidal cast Iron.

LUBRICATION – Power end parts and gearbox are splash lubricated by oil in crankshaft reservoir.

SL SERIES TRIPLEX



KL PUMP:

Maximum design pressure 180bar (2,600psi)
 Maximum inlet pressure 3 bar (45psi)
 Crankshaft with choice of projection

Standard connections: Suction ----- G 1 1/2"
 Discharge ----- 1"

Table of pump versions

Model	RPM	Volume		Pressure		Power	
		L/min	Gpm	Bar	Psi	Kw	Hp
SL 30	1000	84	22.2	180	2600	29.1	39.6
SL 33	1000	102	27.0	150	2150	29.2	39.8
SL 36	1000	122	32.2	120	1750	27.5	37.4
SL 40	850	128	33.8	110	1600	26.9	36.6
SL 45	800	152	40.1	100	1450	29.1	39.6
SL 50	700	164	43.3	80	1150	25.0	34.0

Performances refer to theoretical delivery with 100% volumetric efficiency.

Under normal operating conditions pump volumetric efficiency is over 95%.

Please contact our technical staff in case of continuous and heavy-duty or special applications.

Special versions with stainless steel fluid ends (SLZ – SLN) or aluminium- bronze fluid ends (SLA) are available for pumping sea-water or other aggressive liquids.

SLZ – SLA are rated for continuous duty, SLN versions are rated for standard performances.

These special versions are specially designed for reverse osmosis, ultra-filtration, chemical and water treatment plants and sea water blasting.

AQUA ENERGY