

AQUA ENERGY

**Diesel Engine Driven, Zone-2 and Rig-Safe
High & Ultra High Pressure Water Jetting Units
for Oil-Refineries & Offshore Oil Platforms**
Conforming to Lloyds Open Deck Zone 11 Areas, OCMA MEC 1;
BS5908 Zones 1 & 11; BP 200; Shell ISO 27;
EEMUA No 107 (1992), ATEX 1834-1-2000 Specifications

Model: DS-100-ZONE-2



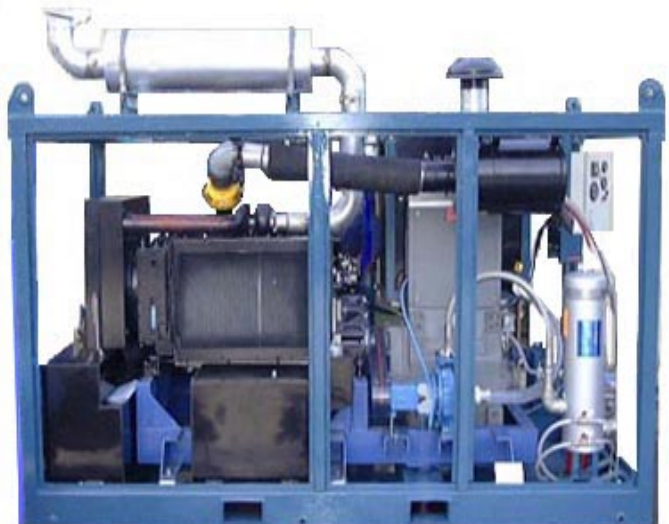
PERFORMANCE

3,500 bar @ 12.00 l/min
1,500 bar @ 27.00 l/min
1,200 bar @ 34.00 l/min
900 bar @ 42.00 l/min
750 bar @ 50.00 l/min
600 bar @ 63.00 l/min

Model: DS-220-RIG-SAFE

PERFORMANCE

3,500 bar @ 22.00 l/min
2,800 bar @ 24.00 l/min
2,500 bar @ 28.00 l/min
2,000 bar @ 40.00 l/min
1,600 bar @ 50.00 l/min
1,200 bar @ 63.00 l/min
1,050 bar @ 81.00 l/min
800 bar @ 104.00 l/min



Aqua Energy International Limited, St James Business Centre, Linwood Road,
Paisley PA3 3AT, Scotland, UK

Tel: (+44) (0) 141 849 6888 Fax: (+44) (0) 141 848 5777

E-mail: info@aquenergy.com www.aquenergy.com

DS-100/220

Standard Features

Pump- DS-100/220 horizontal triplex positive displacement pump, rated up to 220 HP service. Plunger pump consists of stainless steel fluid cylinders, solid ceramic plungers, stainless steel valves and seats with chevron packing. The plungers and packing are water lubricated. The power end of the DS-100/220 series pump is positive splash oil lubricated with sight glass for oil level check. Crankshaft is made of high strength alloy steel. Main bearing is roller.

Suction Plumbing- Water filter 5 micron capacity protects pump.
50 to 200 gallon water storage tank with ball cock and float.

Discharge Plumbing- Discharge manifold with interchangeable high pressure discharge connections for pressure gauge, relief valve, rupture disc and hose couplings. Stainless steel glycerine filled pressure gauge, stainless steel snubber assembly, Rupture disc or relief valve.

Unit Mounting- Mounted on a steel channel frame with pump base and anti-vibration mountings. Steel plate top deck and offshore crash frame.

Power Transmission- Direct Drive via a reduction gearbox or belt drive.

Engines- Perkins 1104 & Volvo series, can be supplied to conform to offshore Zone-2 specifications

Finish System- Units are zinc primed and have one coat of industrial blue (or choice of colour) enamel. Coatings for offshore corrosive atmospheres are available.

Optional Accessories:

Dump-Gun Hand or foot dump control type with safety shroud, whip hose and coupling.

Hoses- High Pressure for use at pressures up to 50,000 psi.

Lances- Rigid and flexible variety SAE, JIC, pipe and welded end connections.

Nozzles- Wide assortment for surface and tube cleaning.

Jets- Surface Preparation Jet for coatings removal and descaling

Regulator- Variable flow and pressure adjustment. Controlled by hand or mechanical actuation.

Auto-Throttle- Variable engine speed adjustments with automatic return to idle when Aqua-Gun is depressurised.

Vacuum- Uses the Jet-Blaster pump to create a vacuum for sludge and slurry transport.

Line Mole- Pipe and sewer cleaning type with replaceable fan and round jet inserts.

Abrasive Injector- Aqua-Saw abrasive injector mixes abrasive into Aqua-Gun discharge stream.

Deck Cleaner- Rotary jet driven multi-nozzle floor and grate cleaning system with hand operated controls.

Couplings- Rated at up to 50,000-psi (3,500bar) working pressure. Optional snap type for use to 10,000 psi.

For further information contact: Aqua Energy International Limited
St James Business Centre
Linwood Road,
Paisley PA3 3AT, Scotland UK
Tel: (+44) (0) 141 849 6888
Fax: (+44) (0) 141 848 5777
E-mail: info@aquaenergy.com
www.aquaenergy.com