

AQUA ENERGY

Skid Mounted, High & Ultra High Pressure Water Jetting Units Choice of Offshore Crash-Frames and Sound Attenuated Canopies

Offshore models conform to the following Regulations

Lloyds Open Deck Zone 11 Areas, OCMA MEC 1;

BS5908 Zones 1 & 11; BP 200; Shell ISO 27;

EEMUA No 107 (1992), ATEX 1834-1-2000 Specifications

Model: DS-150



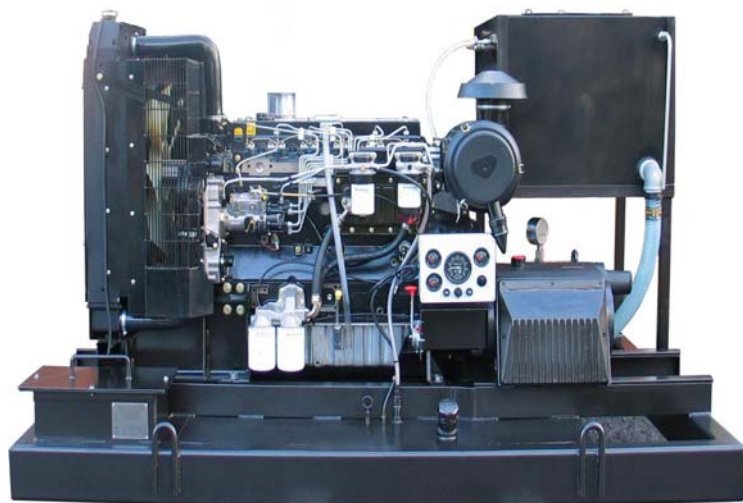
PERFORMANCE

3,500 bar @	15.00 l/min
1,400 bar @	44.00 l/min
1,100 bar @	53.00 l/min
950 bar @	63.00 l/min
800 bar @	74.00 l/min
700 bar @	86.00 l/min
600 bar @	98.00 l/min
300 bar @	190.00 l/min
250 bar @	235.00 l/min
200 bar @	285.00 l/min
170 bar @	335.00 l/min
145 bar @	395.00 l/min

Model: DS-220

PERFORMANCE

3,500 bar @	22.00 l/min
2,800 bar @	25.00 l/min
2,500 bar @	28.00 l/min
2,000 bar @	40.00 l/min
1,600 bar @	50.00 l/min
1,200 bar @	63.00 l/min
1,050 bar @	81.00 l/min
800 bar @	104.00 l/min



Aqua Energy International Limited, St James Business Centre, Linwood Road

Paisley PA3 3AT, Scotland, UK

Tel: (+44) (0) 141 849 6888 Fax: (+44) (0) 141 848 5777

E-mail: info@aquaenergy.com www.aquaenergy.com

DS-150 & DS-220

Standard Features

Pump- DS-150-220 horizontal triplex positive displacement pump, DS-150-220 rated up to 220 HP service. Plunger pump consists of stainless steel fluid cylinders, solid ceramic plungers, stainless steel valves and seats with chevron packing. The plungers and packing are water lubricated. The power end of the DS-150 series pump is positive splash oil lubricated with sight glass for oil level check. Crankshaft is made of high strength alloy steel. Main bearing is roller.

Suction Plumbing- Water filter 5 micron capacity protects pump.
50 gallon water storage tank with ball cock and float, low water level switch shuts down engine.

Discharge Plumbing- Discharge manifold with interchangeable high pressure discharge connections for pressure gauge, relief valve, rupture disc and hose couplings. Stainless steel glycerine filled pressure gauge, stainless steel snubber assembly, Rupture disc or relief valve.

Unit Mounting- Mounted on a steel channel frame with pump base and anti-vibration mountings. Steel plate top deck.

Engines- Perkins or Volvo, can be supplied to conform to offshore Zone-1 and Zone-2 specifications.

Power Transmission- Direct Drive via a reduction gearbox or belt drive.

Finish System- Units are zinc primed and have one coat of industrial blue (or choice of colour) enamel. Fully galvanised or coatings for corrosive atmospheres are available.

Optional Accessories:

Guns Hand or foot dump control type with safety shroud, whip hose and coupling. Air rotary type up to 3500 bar WP.

Hoses- High Pressure for use at pressures up to 45,000 psi.

Lances- Rigid and flexible variety SAE, JIC, pipe and welded end connections.

Nozzles- Wide assortment for surface and tube cleaning.

Rotary- Surface Preparation Jet for coatings removal and descaling

Regulator- Variable flow and pressure adjustment. Controlled by hand or mechanical actuation.

Auto-Throttle- Variable engine speed adjustments with automatic return to idle when Aqua-Gun is depressurised.

Vacuum- Uses the Jet-Blaster pump to create a vacuum for sludge and slurry transport.

Line Mole- Pipe and sewer cleaning type with replaceable fan and round jet inserts.

Abrasive Injector- Aqua-Saw abrasive injector mixes abrasive into Aqua-Gun discharge stream.

Deck Cleaner- Rotary jet driven multi-nozzle floor and grate cleaning system with hand operated controls.

Couplings- Quick disconnect Acme thread rated at up to 20,000-psi working pressure. Optional snap type for use to 10,000 psi.

For further information contact: Aqua Energy International Limited
St James Business Centre
Linwood Road,
Paisley PA3 3AT, Scotland UK
Tel: (+44) (0) 141 849 6888
Fax: (+44) (0) 141 848 5777
E-mail: info@aquaenergy.com
www.aquaenergy.com